



# PUBLIC HEALTH IN A DUAL PANDEMIC

SUNDAY, OCTOBER 25, 2020 | 6:30 PM EST

[REGISTRATION LINK](#)

Join leaders of public health from Michigan State University as they discuss how pandemics, racism, health disparities, and health equity frameworks can have a significant impact on the lived experiences of people in differing communities.

The first 50 guests who register and attend will receive a thank you gift.

## SPEAKER PANEL



**Aron Sousa,**  
MD, FACP,  
Interim Dean of the  
College of Human  
Medicine



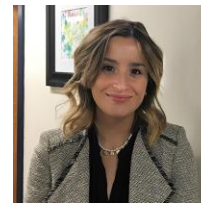
**Wayne McCullough,**  
PhD, Program  
Director of the  
Master of Public  
Health Program



**Mona Hanna-Attisha,**  
MD, MPH, FAAP,  
Director of the  
Michigan State  
University and  
Hurley Children's  
Hospital Pediatric  
Public Health Initiative



**Renee Canady,**  
PhD, MPA,  
CEO for Michigan  
Public Health  
Institute and  
Assistant Professor,  
Master of Public  
Health program



**Robey Champine,**  
PhD, MS, MPH,  
Assistant Professor,  
Master of Public  
Health program and  
former FBI Analyst